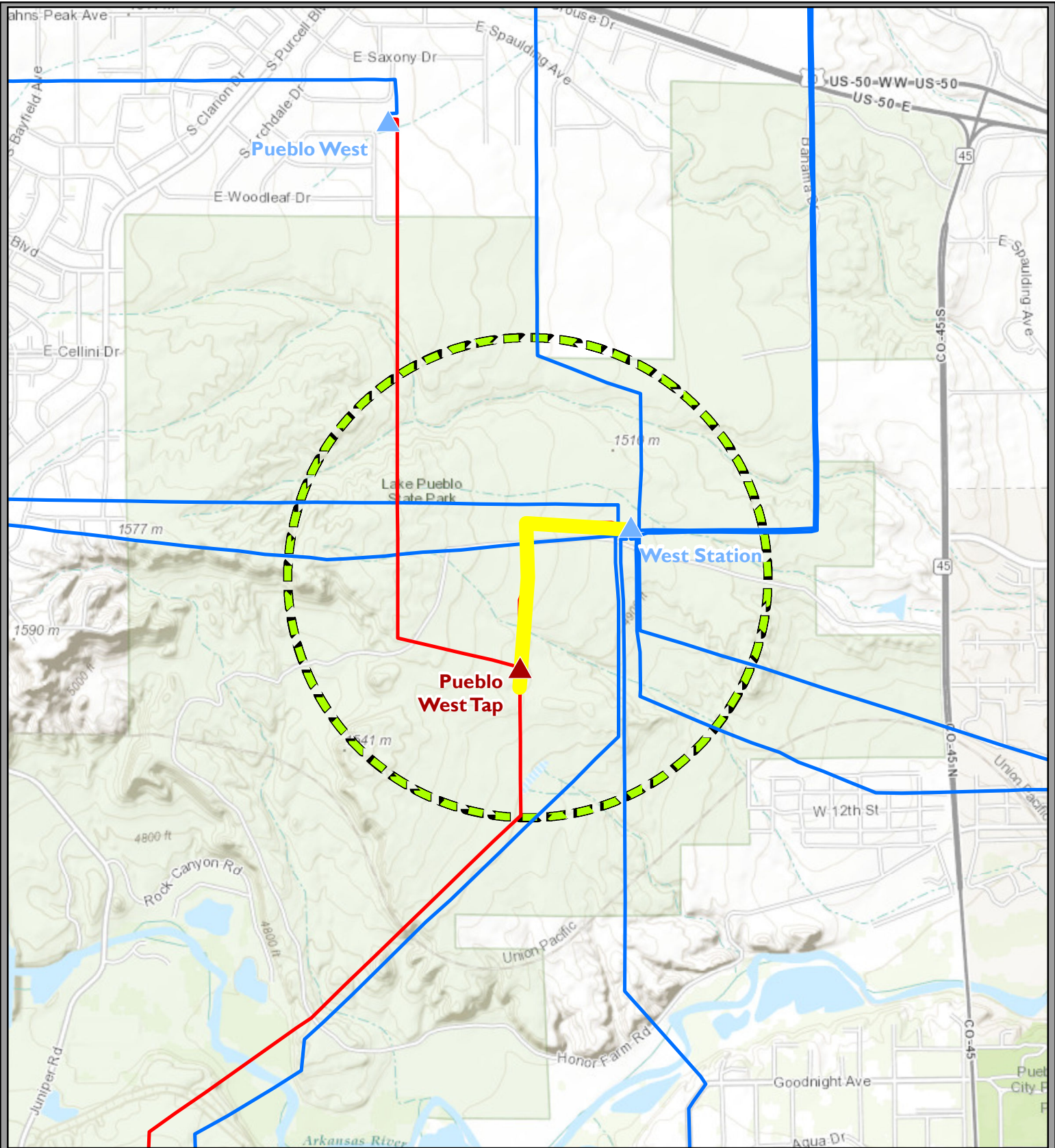


**Tri-State Generation and Transmission Association
2016-2026 Transmission Plan
Pueblo West Tap Line Uprate**

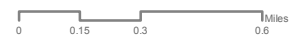
| | |
|--|---|
| Project Sponsor: | Tri-State Generation and Transmission Association |
| Additional Project Participants: | |
| Project Description: | Upgrade existing 115 kV line conductor |
| Voltage Class: | 115 kV |
| Facility Rating: | 130 MVA |
| Point of Origin/Location: | West Station |
| Point of Termination: | Pueblo West Tap |
| Intermediate Points: | |
| Length of Line (in Miles): | 0.5 Miles |
| Type of Project: | Transmission Line |
| Development Status: | Under Construction |
| Routing: | |
| Subregional Planning Group: | CCPG |
| Purpose of Project: | Reliability, eliminate overloading of existing line for NERC Category B contingency |
| Project Driver (Primary): | Reliability |
| Project Driver (Secondary): | |
| Estimated Cost (in 2014 Dollars): | \$576,000 |
| Schedule: | |
| Construction Date: | |
| Planned In-Service Date: | 2016 |
| Regulatory Info: | |
| Regulatory Date: | |
| Permitting Info: | |
| Permitting Date: | |
| Contact Information: | Chris Pink |
| Email | cpink@tristategt.org |
| Phone | (303) 254-3339 |
| Website Information | http://www.tristategt.org/transmissionPlanning/puc3627_TransmissionProjects.cfm |



Tri-State Generation and Transmission

Pueblo West Tap Line Uprate

- ▲ Station - Tri-State
- ▲ Station - Other Utility
- Transmission Line - Tri-State
- Transmission Line - Other Utility
- Project Area
- Project Feature



Last Updated: 11/20/2015
 Author: ykevro

Tri-State Generation and Transmission Association provides GIS data to aid the development of Tri-State projects. No user of Tri-State's GIS data and maps may sell any portion of the information provided therein. Tri-State makes no warranty regarding accuracy or completeness of the data and maps. Users shall rely only upon proper field verification of Tri-State GIS data.



Pueblo West Tap Line Uprate

During Tri-State's annual transmission assessment, it was found that the Pueblo West Tap-West Station 115kV line would become thermally overloaded after certain contingency/outages. In order to prevent these overload conditions, it was determined the best fix would be to uprate the existing line from 95MVA to 130MVA by rebuilding 0.3 miles of the existing transmission line.