

Tri-State Generation and Transmission Association 2014-2023 Transmission Plan

Promontory Park Project

Project Sponsor:	Tri-State Generation and Transmission Association
Additional Project Participants:	
Project Description:	Construct a new 230/115 kV substation in the vicinity of the existing East Kodak tap along WAPA's 115 kV Weld-Whitney line. Rebuild a portion of WAPA's 115 kV Weld-Whitney line and Xcel's 115 kV Weld-Johnstown line as a double circuit 230 kV line. Additional existing lines will also need to be rerouted and terminated at this new Promontory Park Substation.
Voltage Class:	230 kV
Facility Rating:	612 MVA
Point of Origin/Location:	Promontory
Point of Termination:	Weld
Intermediate Points:	
Length of Line (in Miles):	5.0
Type of Project:	Transmission Line and Substation
Development Status:	Planned
Routing:	
Subregional Planning Group:	CCPG
Purpose of Project:	Transmission service to PVREA load area.
Estimated Cost (in 2013 Dollars):	\$22,394,000
Schedule:	
Construction Date:	2013
Planned In-Service Date:	2017
Regulatory Info:	
Regulatory Date:	
Permitting Info:	
Permitting Date:	
Contact Information:	Matthew Haag
Email	mhaag@tristategt.org
Phone	(303) 254-3159
Website Information	http://www.tristategt.org/transmissionPlanning/puc3627_TransmissionProjects.cfm

Promontory Park Project: Promontory Park – Weld 230 kV Line

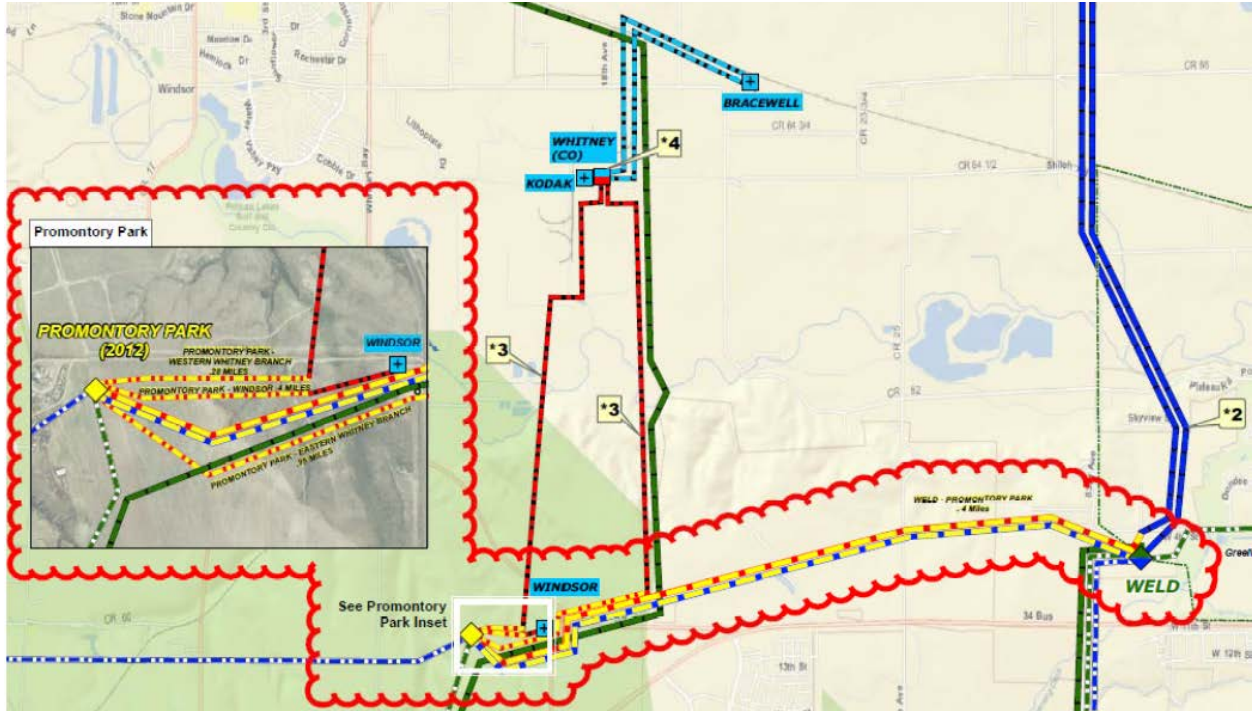


Figure 11: Promontory Park Project: Promontory Park – Weld 230 kV Line Map

Tri-State proposes to construct a new, 4 mile, 230 kV, 1272 ACSR line in Weld County by rerouting one of WAPA’s 230 kV circuits from Ault (which currently terminate at the existing 230-115 kV Weld Substation) and instead building a new line termination for the circuit in the new 230-115 kV Promontory Park Substation, to be located in the vicinity of WAPA’s existing 115-12.5 kV Windsor substation and the 115 kV Whitney line taps of WAPA’s 115 kV Weld-Whitney-Airport line. Construction of Promontory Park will allow Tri-State to serve its member’s (PVREA) existing load, and future load growth, more reliably and economically than is possible from WAPA’s aged and overloaded 115 kV Weld-Whitney-Airport line. The project will also enable construction of the line termination of 3 new short (less than 1 mile) 115 kV, 795 ACSR line extensions that will be built to allow Tri-State to more reliably serve PVREA’s very large (60 MW) industrial and commercial load in the region from a 230 kV source using Tri-State resources.

In terms of improving the reliability of Tri-State’s 115 kV transmission service to PVREA’s load in the region, construction of the Promontory Park project will provide the additional benefit of alleviating the overload of the north-south portions of the 115 kV Weld-Whitney, and Whitney-Winsor Tap-Airport lines. By constructing the Promontory Park 230-115 kV substation and providing new line terminations on the 115 kV bus for each of these (2) 115 kV lines to Whitney, this project will serve to fulfill Tri-State’s regulatory compliance obligations. This project is presently planned to be financed and constructed solely by Tri-State.